

Villa for Sale to Montafia



680 sqm | Bathrooms: 6 | Bedrooms: 8 | Rooms: 13

In the municipality of Montafia, about 30 minutes from Turin and 10 from the Villanova d'Asti motorway exit, two mirrored single-family villas in a panoramic position a few steps from the centre, each of about 300 m², on a single level connected by a large common patio with an imposing fireplace, within a park of approximately 20,000 m², partly flat and composed of fine tall trees and a well-kept botanical garden.

Each villa is composed of a living room entrance onto a double living room of 50 m² with fireplace, kitchen, four bedrooms, one of which is a master bedroom with walk-in closet and en suite bathroom, two bathrooms and a comfortable internal staircase connecting the basement consisting of a rumpus room, lounge entertainment, cellar, laundry area.

Convenient access to the garage of approximately 90 m².

All rooms are equipped with large windows that give extreme brightness and direct access to the garden, Florentine Montecchi terracotta floors, parquet in the sleeping area, double-glazed Douglas fir windows.

Heating with methane boiler, cavity surrounding the property.

The surrounding landscape is characterized by the rolling hills of Monferrato with alternating woods, crops and vineyards.

THE PROPERTY IS ALSO SUITABLE FOR ACCOMMODATION, AGRITURISMO OR RIDING STABLE USE.

Cat A/7 RCE 774.69

Cat A/7 RCE 774.69

APE class E EPgl, nren kwh/m² year 239.46

Property details

Ref.: 12410

Reason: Sale

Il presente stampato ha valore puramente indicativo e non costituisce elemento contrattuale nè presupposto contrattuale.

Chiusano & C. Torino

Via Pastrengo, 29 - Torino (TO) - Phone number 0115682858

chiusano@chiusano.com - <https://www.chiusano.com>

V.A.T. 03113370013

Type: Villa	Region: Piemonte
Province: Asti	Municipality: Montafia
Price: € 580.000	Total sq.m.: 680 sqm
Bedrooms: 8	Bathrooms: 6
Rooms: 13	Total Floor: 2
Age Construction: 1983	Available: Yes
Garage: Shed	

Features

Tv Antenna	Tv SAT	Closet
Fireplace	Parquet	Telephone System
Wiring	Shower	Wooden Window Frames
Shutters	Shutters	



Il presente stampato ha valore puramente indicativo e non costituisce elemento contrattuale nè presupposto contrattuale.

Chiusano & C. Torino

Via Pastrengo, 29 - Torino (TO) - Phone number 0115682858

chiusano@chiusano.com - <https://www.chiusano.com>

V.A.T. 03113370013



Il presente stampato ha valore puramente indicativo e non costituisce elemento contrattuale nè presupposto contrattuale.

Chiusano & C. Torino

Via Pastrengo, 29 - Torino (TO) - Phone number 0115682858

chiusano@chiusano.com - <https://www.chiusano.com>

V.A.T. 03113370013



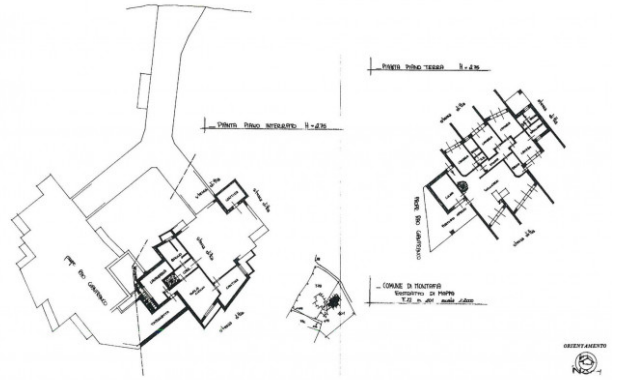
Il presente stampato ha valore puramente indicativo e non costituisce elemento contrattuale nè presupposto contrattuale.

Chiusano & C. Torino

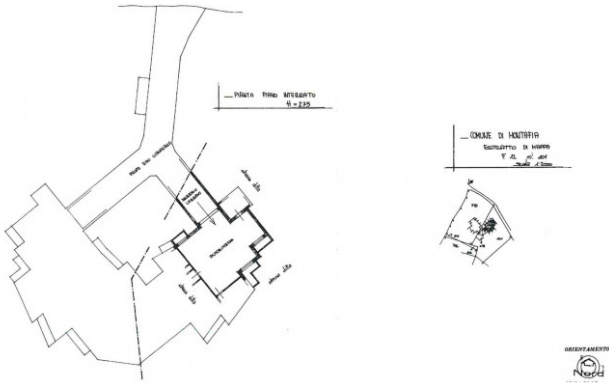
Via Pastrengo, 29 - Torino (TO) - Phone number 0115682858

chiusano@chiusano.com - <https://www.chiusano.com>

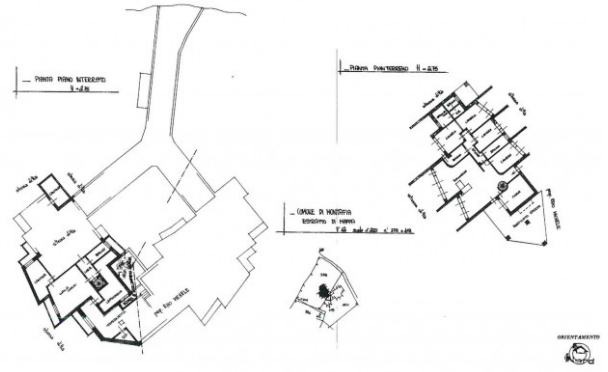
V.A.T. 03113370013



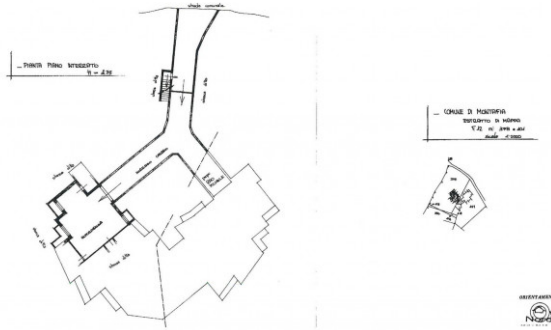
PLANIMETRIA INDICATIVA



PLANIMETRIA INDICATIVA



PLANIMETRIA INDICATIVA



PLANIMETRIA INDICATIVA

Il presente stampato ha valore puramente indicativo e non costituisce elemento contrattuale nè presupposto contrattuale.

Chiusano & C. Torino

Via Pastrengo, 29 - Torino (TO) - Phone number 0115682858

chiusano@chiusano.com - <https://www.chiusano.com>

V.A.T. 03113370013